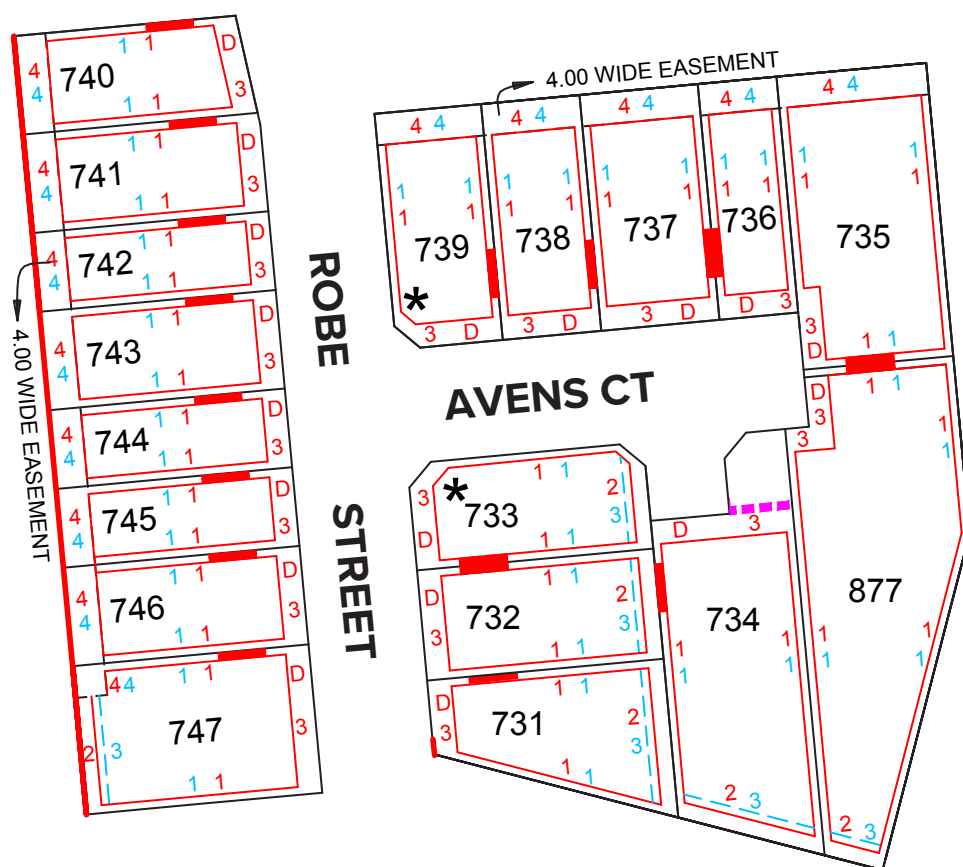


Fairland Group Pty Ltd. 19 Fullarton Road, Kent Town SA 5067 call 08 8112 3133 fairland.com.au

This is an indicative plan only. It may change and is subject to, and must be read in conjunction with the details and specifications contained in the engineers and other drawings held by council in relation to this development. Fairland will not be liable in any way whatsoever for any inaccuracies contained in this document. 14831



- Denotes split refer to Engineering design
- Denotes garage can be built on boundary.
- D Denotes driveway location.
- Single Storey Setback
(distance from boundary or tie line shown)
- Two Storey Setback
(distance from boundary or tie line shown)
- * Dwelling must address both road frontages
- Denotes NO vehicular access
- Denotes retaining wall.

Fairland Group Pty Ltd. 19 Fullarton Road, Kent Town SA 5067 call 08 8112 3133 fairland.com.au

This is an indicative plan only. It may change and is subject to, and must be read in conjunction with the details and specifications contained in the engineers and other drawings held by council in relation to this development. Fairland will not be liable in any way whatsoever for any inaccuracies contained in this document. 14831