

ALLOTMENT 1246 in DEV. NO. 145/D177/12  
 in the area named  
**SEAFORD MEADOWS**  
 CT ---/----

**ASCONSTRUCTED**

**SHIP STREET**

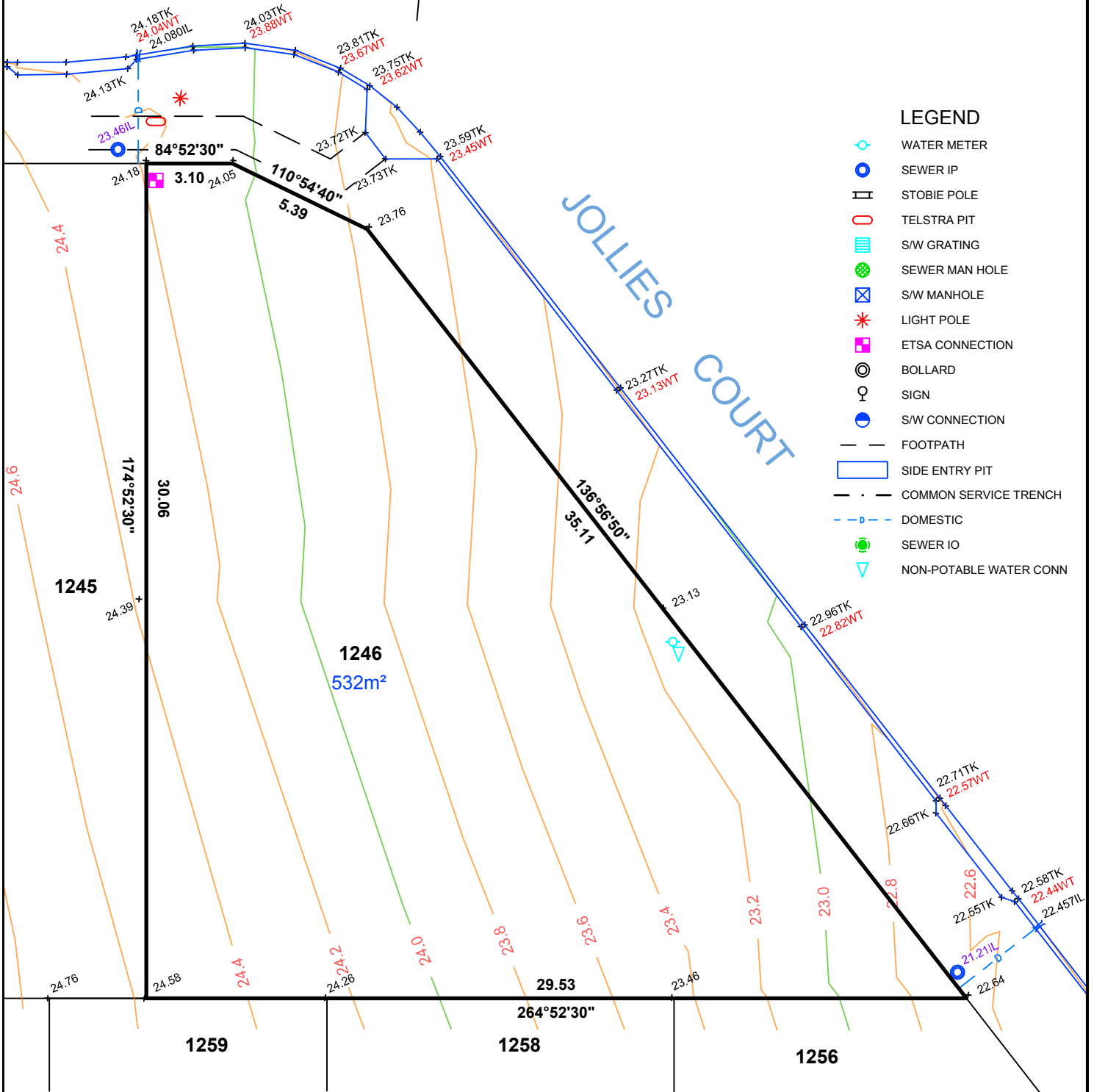
**JOLLIES COURT**

**IMPORTANT**  
 SERVICE AND DRIVEWAY LOCATIONS  
 ARE APPROXIMATE. ANY CHANGES WILL  
 BE AT THE PURCHASERS EXPENSE.  
 PURCHASER: \_\_\_\_\_  
 PURCHASER: \_\_\_\_\_  
 DATE: \_\_\_\_\_



**LEGEND**

- WATER METER
- SEWER IP
- STOBIE POLE
- TELSTRA PIT
- S/W GRATING
- SEWER MAN HOLE
- S/W MANHOLE
- LIGHT POLE
- E.T.S.A CONNECTION
- BOLLARD
- SIGN
- S/W CONNECTION
- FOOTPATH
- SIDE ENTRY PIT
- COMMON SERVICE TRENCH
- DOMESTIC
- SEWER IO
- NON-POTABLE WATER CONN



**NOTE:**  
 DRIVEWAY IN PAVERS  
 BY DEVELOPER



1:200

ALEXANDER SYMONDS  
 PH 8130 1666  
 REF: A082704.C7C2

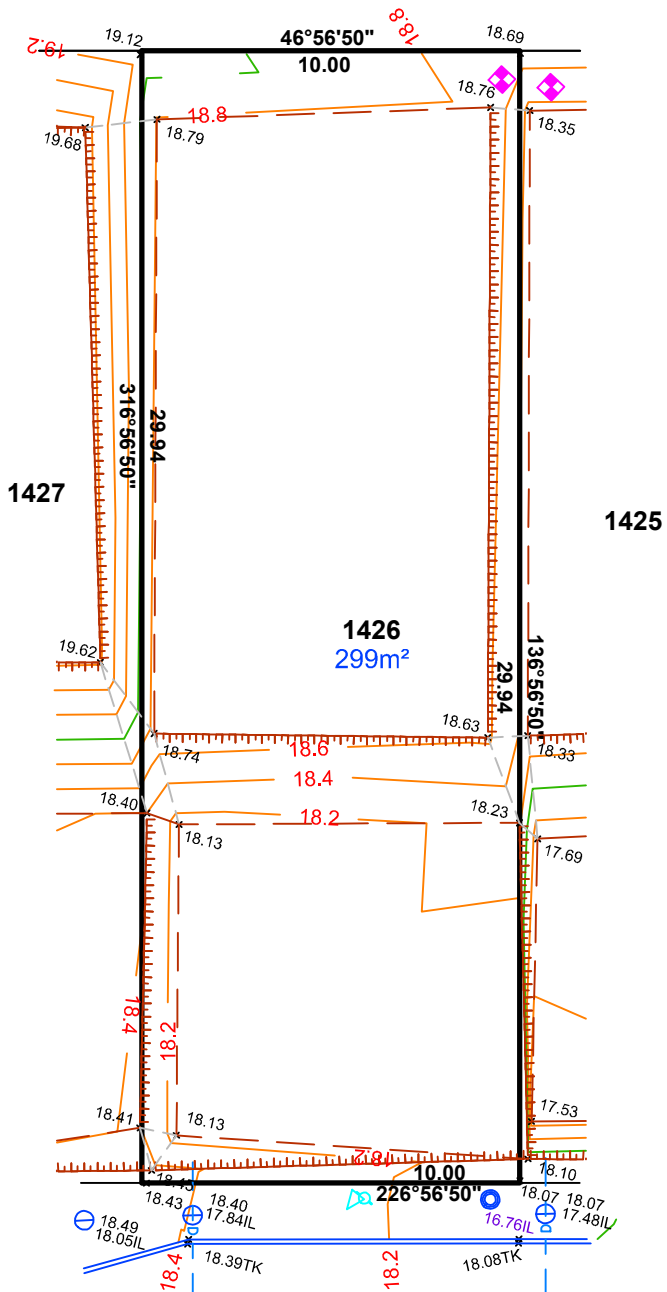
ORIGINAL SHEET SIZE A4

**IMPORTANT**  
 SERVICE AND DRIVEWAY LOCATIONS  
 ARE APPROXIMATE. ANY CHANGES WILL  
 BE AT THE PURCHASERS EXPENSE.  
 PURCHASER: \_\_\_\_\_  
 PURCHASER: \_\_\_\_\_  
 DATE: \_\_\_\_\_

ALLOTMENT 1426 in DEV. NO. 145/D177/12  
 in the area named  
**SEAFORD MEADOWS**  
 CT ---/----

**ASCONSTRUCTED**

**RESERVE**



**DUFFERIN LANE**

**LEGEND**

- WATER METER
- SEWER IP
- STOBIE POLE
- TELSTRA PIT
- S/W GRATING
- SEWER MAN HOLE
- S/W MANHOLE
- LIGHT POLE
- ETSA CONNECTION
- BOLLARD
- SIGN
- S/W CONNECTION
- FOOTPATH
- SIDE ENTRY PIT
- COMMON SERVICE TRENCH
- DOMESTIC
- SEWER IO
- NON-POTABLE WATER CONN

**NOTE:**  
 DRIVEWAY IN PAVERS  
 BY DEVELOPER



**1:200**

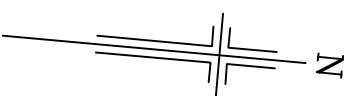
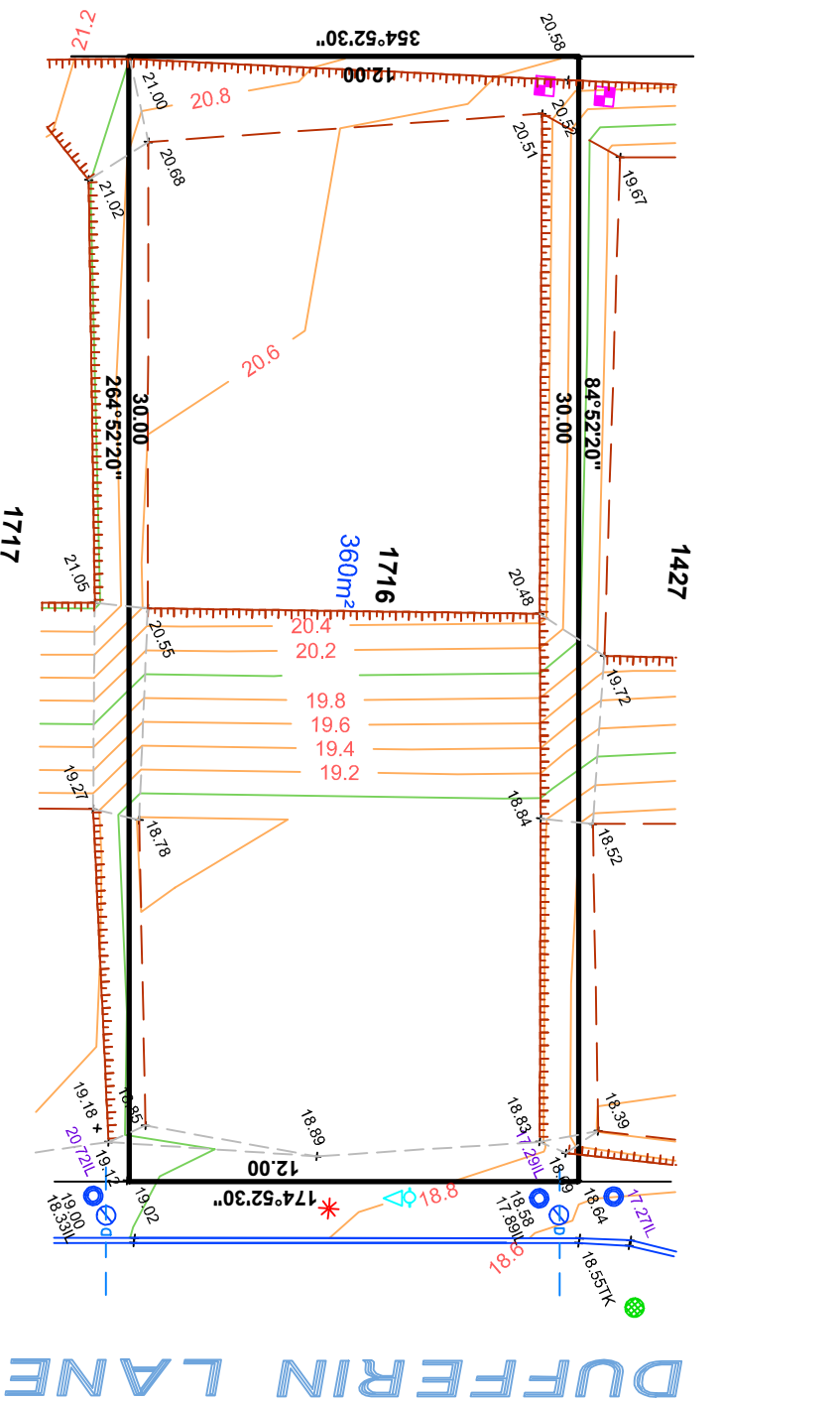
ALEXANDER SYMONDS  
 PH 8130 1666

DISCLAIMER: DATA SHOWN HEREON IS DESIGN INFORMATION AND SHOULD BE CONFIRMED  
 ORIGINAL SHEET SIZE A4

**IMPORTANT**  
 SERVICE AND DRIVEWAY LOCATIONS  
 ARE APPROXIMATE. ANY CHANGES WILL  
 BE AT THE PURCHASERS EXPENSE.  
 PURCHASER: \_\_\_\_\_  
 PURCHASER: \_\_\_\_\_  
 DATE: \_\_\_\_\_

ALLOTMENT 1716 in DEV. NO. 145/D177/12  
 in the area named  
 SEAFORD MEADOWS

**ASCONSTRUCTED**



- LEGEND**
- WATER METER
  - SEWER IP
  - STOBIE POLE
  - TELSTRA PIT
  - SW GRATING
  - SEWER MAN HOLE
  - SW MANHOLE
  - LIGHT POLE
  - ETSA CONNECTION
  - BOLLARD
  - SIGN
  - SW CONNECTION
  - FOOTPATH
  - SIDE ENTRY PIT
  - COMMON SERVICE TRENCH
  - DOMESTIC
  - SEWER IO
  - NON-POTABLE WATER CONN

**NOTE:**  
 DRIVEWAY IN PAVERS  
 BY DEVELOPER

ALEXANDER SYMONDS  
 PH 8130 1666  
 REF: A082704.C7C2

